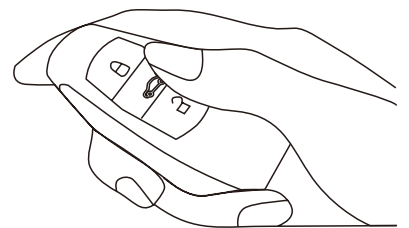
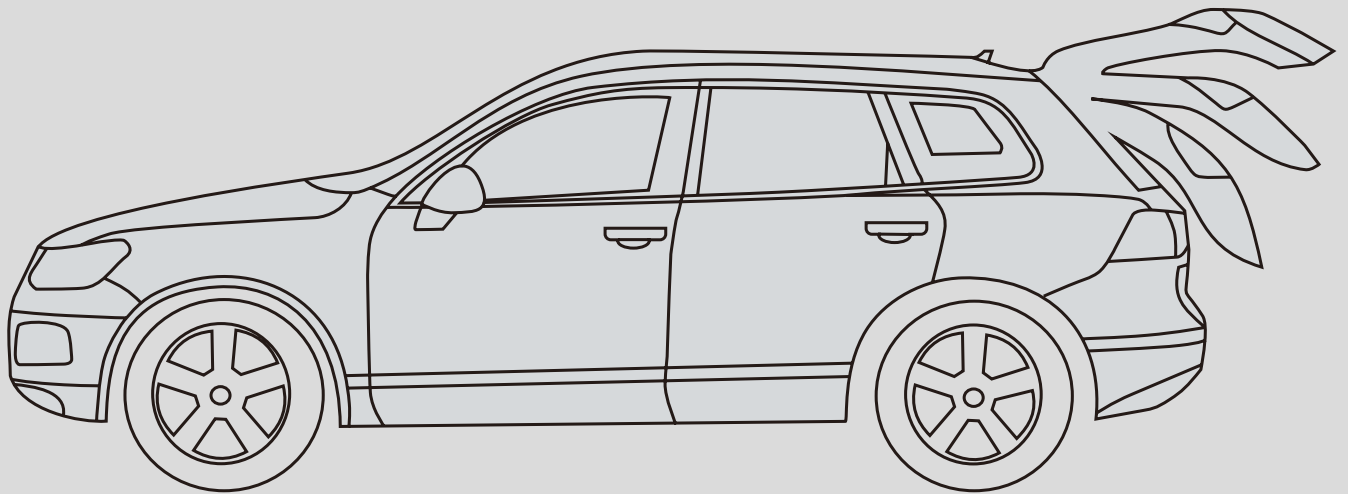


Installation Manual: Honda CRV Power Lift Gate System



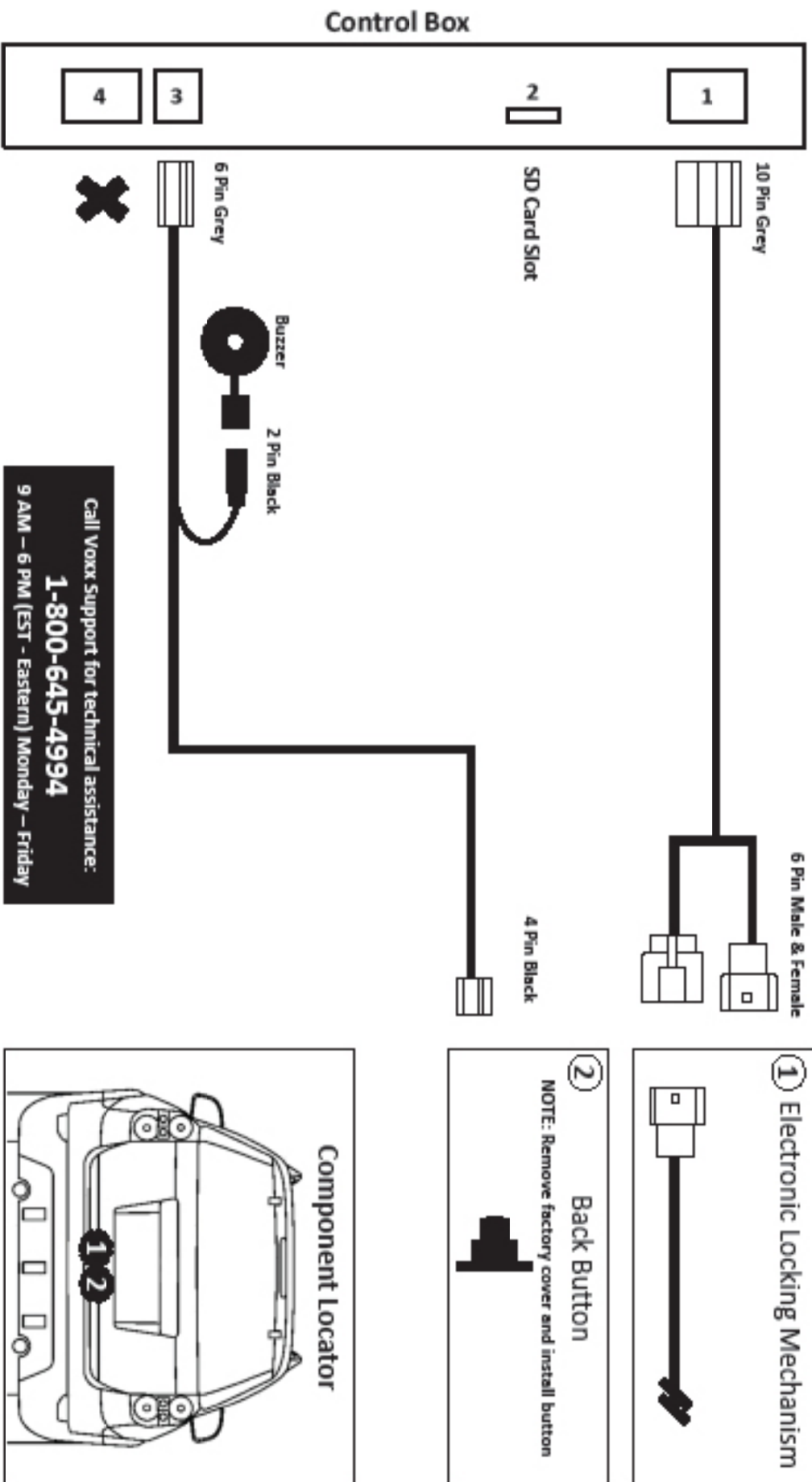
NOTE: Installation Precaution

1. It is recommended to have this product installed by a professional to avoid damage caused by improper installation.
2. Do not attempt to disassemble or modify any components included within the kit. Unapproved modifications or evidence of tampering will void any warranty included with the product.
3. Before installation, inspect the vehicle's controls and interior/exterior for any damage or malfunctioning components. Report any damage or non conformities to the customer prior to installing the product.
4. Inspect the factory lift gate for proper operation and function of lights before installing this product. Improper opening or closing of the lift gate may interfere with the functionality of the Power Lift Gate System.
5. It is recommended to remove or cover any item of clothing (belt buckles, jeans rivets, buttons, etc) prior to installation of this accessory to prevent damage incurred to the vehicle during the installation.
6. Interior panels that have been removed should be set aside somewhere safe during the installation process to avoid damage.
7. When routing and securing wiring harnesses, care should be exercised to avoid any hot, sharp, or moving objects in the vehicle such as steering column, pedals, dash bracing, HVAC components, etc.
8. Do not deviate from methods of installation in this document. Any damage caused by improper wire routing, incorrect connections, wiring, etc. is not covered under the warranty.
9. Disconnect the negative (-) battery terminal before proceeding to installation. Wait at least 2 minutes after disconnecting the negative (-) battery terminal to disable the SRS and other systems in the vehicle. Any damage caused from failure to disconnect the battery is not covered under the warranty.
10. After installation, you must manually close the lift gate to initialize the Power Lift Gate System.

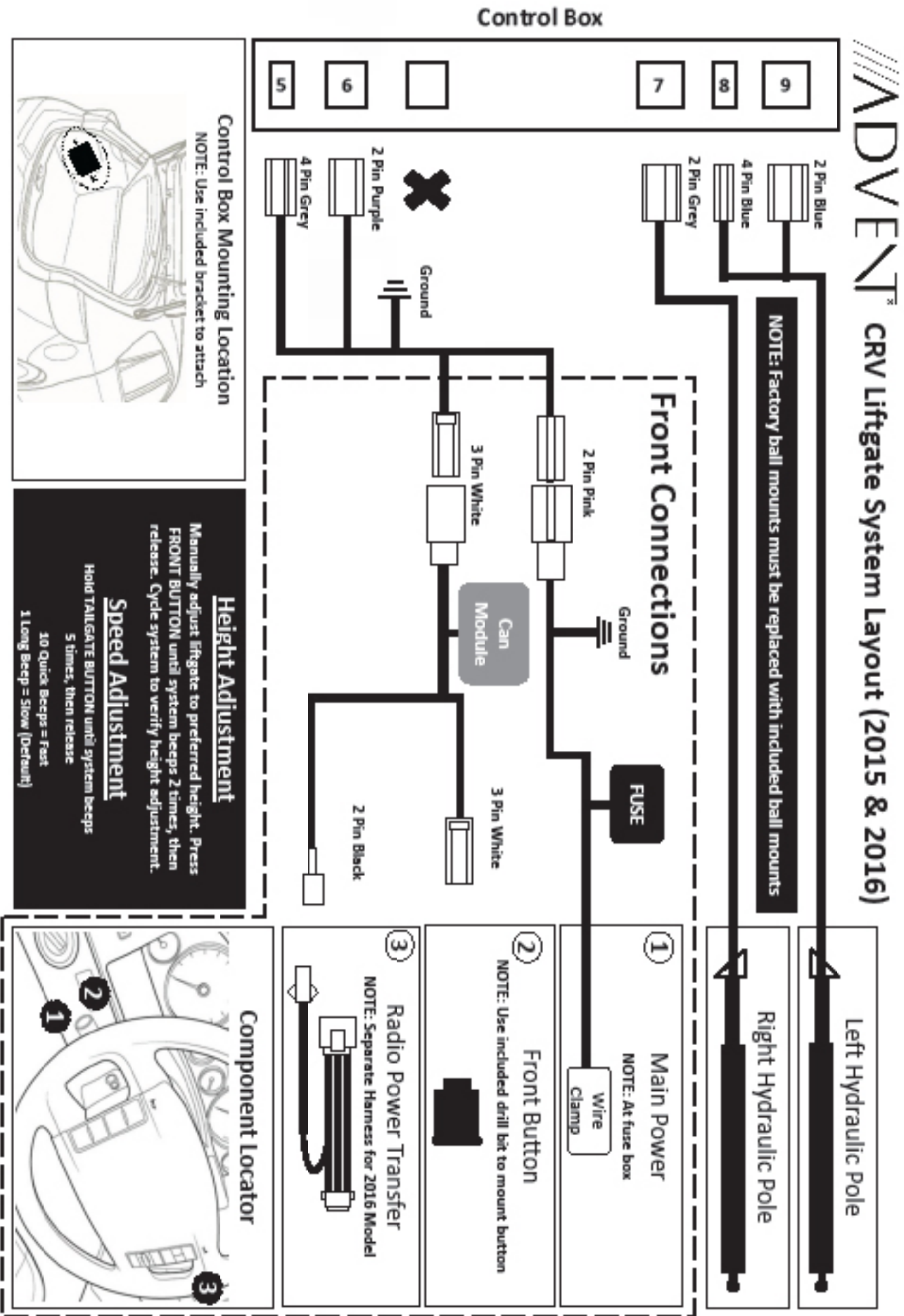
Wiring Details

ADVENT[®] CRV Liftgate System Layout (2015 & 2016)

NOTE: This kit does not apply to the 2017 New Body Style CRV



Wiring Details



PREPARING FOR INSTALLATION

INSTALLATION PREPARATION

Before starting installation

1. Familiarize yourself with the installation instructions.
2. Inspect kit components to verify everything is present, there is no damage, and to familiarize yourself with the parts.

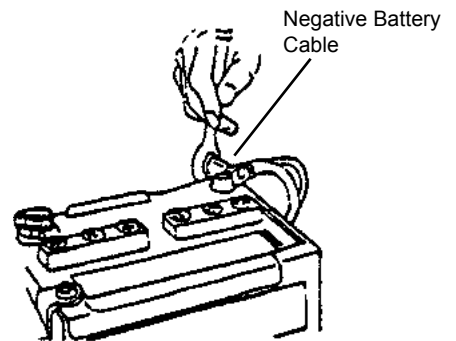
VEHICLE PREPARATION

1. Place protective coverings on vehicle.
2. Apply protective tape to all points before prying.

3. **"IMPORTANT.....IMPORTANT"**



Disconnect Negative Battery Cable



INSTALLATION:

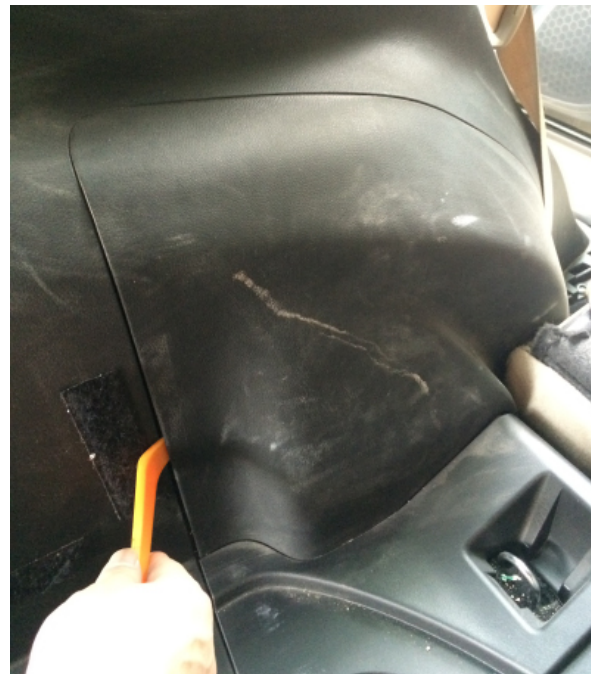
1. Lift and remove the luggage compartment floor board.
2. Disengage the clips holding the cloth trim from the back of the seats from the floor trim garnish.



3. Disengage the clips and remove the luggage compartment trim garnish from the floor.



4. Use a moulding remover, gently disengage the claws and remove the LH side access panel behind the LH rear seat.



5. Disengage the claws, and remove the driver's side rear door scuff plate.



6. Carefully disengage the claws and remove the LH rear side trim panel.



7. Remove the hook by depressing the black spot in the middle and pulling outward.



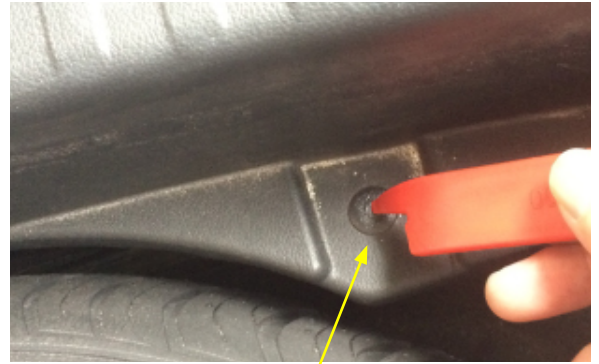
8. Remove the cover off of the handle. Then remove the (2) screws securing the release handle to the wall.



9. Remove the screw to remove the LH tie-down cleat. Repeat for the RH side.



10. Press the center of the clip, and lift up to disengage the clips from the rear luggage compartment opening garnish plate.



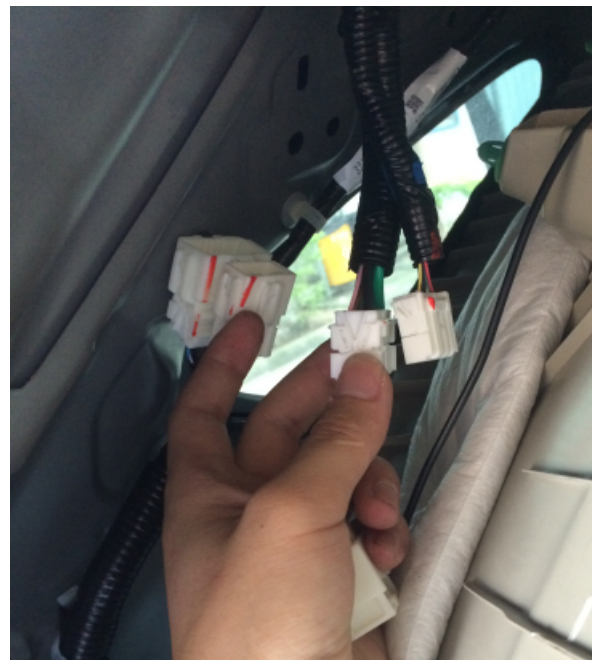
11. Carefully pry to disengage the clips to remove the luggage compartment opening garnish plate.



12. Carefully pry to disengage all of the clips, and remove the LH inside quarter panel trim panel.



13. Carefully pry to disengage the clips securing the upper trim panel to access the connectors behind it. It is not necessary to completely remove the trim panel.



14. Connect the supplied T-Harness to the OEM lift gate latch/lock connector.



15. Using a Nylon Trim Tool, carefully disengage the clips and remove both the left and right side vent registers.

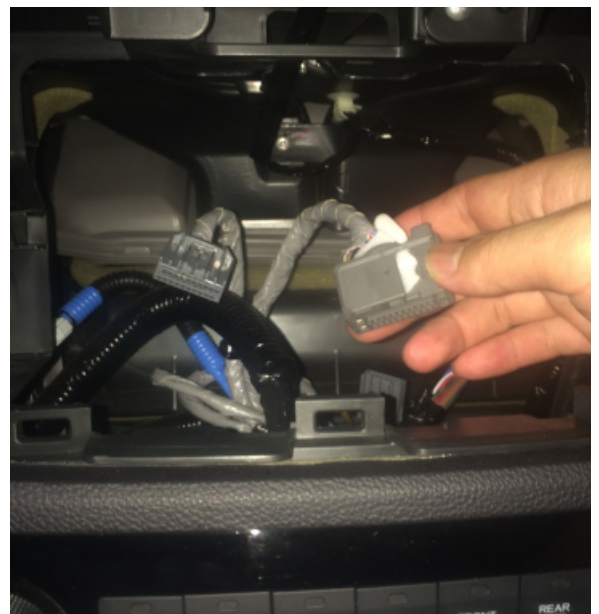


16. Remove the (2) screws and disengage the claws securing the factory radio. Disconnect any electrical connectors and remove the radio from the dash.



Screw Locations

17. Using the supplied T-Harness, connect to the factory harness located behind the radio. After making the connection, route the harness towards the driver's side lower dash area.



18. Using a Nylon Removal Tool, carefully disengage the claws and remove the driver's side trim panel.



19. Carefully pry on the driver's dash trim panel to disengage the clips and remove it. Set aside where it will not get damaged.



20. Remove the screw, then disengage the clips to remove the driver's side lower dash finish panel.



21. Locate the large wire harness up near the dash brace. Locate the large WHITE wire within this harness. Use the supplied splice-clip and attach the YELLOW power wire from the Power Lift Gate Kit to the WHITE power wire.



22. Drill a hole and mount the dash mounted open/close button in the driver's lower dash finish panel, as pictured.



23. Begin routing the main wiring harness down the driver's side of the vehicle, towards the control module mounting location in the rear quarter panel.



24. Remove the screws securing the tail lamp to the vehicle's body. Then disengage the clips to loosen the tail lamp assembly. Disconnect the wiring harness, remove, and set the tail lamp assembly aside where it will not be damaged.

Repeat for other side tail lamp assembly.



25. Using a helper or supporting brace, support the lift gate in the full opened position.

26. Using a pry tool, remove the lower clip on the end of the OEM gas support struts for the lift gate.

Exercise caution when removing the support struts, as the lift gate is very heavy once removed.



27. Using a pry tool, remove the upper clip on the end of the OEM gas support strut for the lift gate, and remove the support strut.

28. Repeat for the opposite side.



29. Remove the OEM support strut mounting bracket, and replace with the one supplied in the kit. Note the LEFT and RIGHT sides when replacing the brackets.



30. Remove the ball mount for the OEM support strut on the lift gate structure. Replace with the ball mounts supplied in the kit.



31. Install the Power Lift Gate Motors to the new mounts, verifying that the clips are fully engaged. Ensure the LEFT and RIGHT motors are mounted on the correct sides. Then reinstall the tail lamp assemblies, taking care to locate the Power Lift Motor in the slot on the tail lamp assembly.



32. Remove the tape securing the wire loom to the tail lamp rubber wiring boot. Route the Power Lift Gate Motor's wiring harness through the tail lamp wiring boot, to the interior of the vehicle.

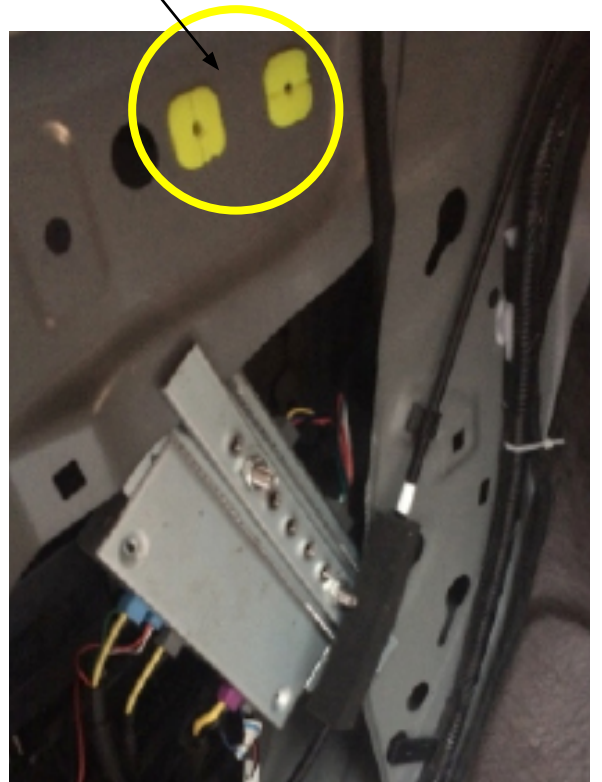
33. Once wire is completely pulled through wiring boot, re-tape with waterproof electrical tape to prevent water leaks.

34. Route the RH Lift Motor's wiring harness towards the driver's side of the vehicle, following the illustrated to the path. Secure to the vehicle's body along the routing path.

35. Make all appropriate connections to the control module. Then, using the supplied mounting bracket secure the control module to the vehicle's body structure in the LH rear quarter panel area. Note the location of the rear seat release handle for reference.



Rear Seat Release Handle Mounting Location



36. Disengage the claws and remove the lift gate center trim garnish.



37. Disengage the claws and remove the lift gate side trim garnish. Repeat for other side.



38. Remove the screw inside the pull handle. Then carefully pry to disengage the claws and remove the pull handle.



39. Disengage the clips and remove the lift gate interior trim panel.



40. Route the open/close button's wiring harness up through the OEM wire harness boot and into the lift gate.



41. Drill a hole in the pull handle and mount the open/close button on the left side of the handle.



42. For 2013 Model Year vehicles, mount the open/close button on the lift gate interior trim panel as shown.



43. IMPORTANT: Prior to closing, ensure door panel is re-installed. Manually close the lift gate to initialize the Power Lift Gate System. Function test the system to verify proper operation.

THESE POINTS MUST BE CHECKED TO ENSURE A QUALITY INSTALLATION

- | | |
|--|--|
| <input type="checkbox"/> Head Light
<i>If the warning lights remains on, it may indicate a system malfunction.</i> | <input type="checkbox"/> Massage Seats (if equipped) |
| <input type="checkbox"/> High Beams | <input type="checkbox"/> Power Side Mirrors (if equipped) |
| <input type="checkbox"/> Turn Signal Lights | <input type="checkbox"/> Side Mirror Defogger (if equipped) |
| <input type="checkbox"/> Tail Lights | <input type="checkbox"/> Front Windshield Defogger (if equipped) |
| <input type="checkbox"/> Stop Lights | <input type="checkbox"/> Navigation System (if equipped) |
| <input type="checkbox"/> Backup Lights | <input type="checkbox"/> Rear Sunshade (if equipped) |
| <input type="checkbox"/> Hazard Lights | <input type="checkbox"/> Cruise Control Light (if equipped) |
| <input type="checkbox"/> Marker Lights | <input type="checkbox"/> Steering Wheel Audio Control (if equipped) |
| <input type="checkbox"/> Dome/Courtesy Lights | <input type="checkbox"/> HVAC |
| <input type="checkbox"/> Panel/Switch Illumination | <input type="checkbox"/> Power Locks (if equipped) |
| <input type="checkbox"/> Accessory Controls/Illumination (if equipped) | <input type="checkbox"/> Power Windows (if equipped) |
| <input type="checkbox"/> Rear Window Defogger (if equipped) | <input type="checkbox"/> Gauges |
| <input type="checkbox"/> Key Sensor Buzzer | <input type="checkbox"/> Front Wiper/Washer |
| <input type="checkbox"/> Fog Lights (if equipped) | <input type="checkbox"/> Hood Latch Release |
| <input type="checkbox"/> Day Time Running Lights (if equipped) | <input type="checkbox"/> Passenger Air Bag Switch (if equipped) |
| <input type="checkbox"/> Trunk/Tailgate/Bed Lights (if equipped) | <input type="checkbox"/> Rollover Side Curtain Air Bag Switch (RSCA) |
| <input type="checkbox"/> Glove Box Light (if equipped) | <input type="checkbox"/> Horn |
| <input type="checkbox"/> ABS Light (if equipped) | <input type="checkbox"/> Seat Belt Warning Light
<i>If the warning lights remains on, it may indicate a system malfunction.</i> |
| <input type="checkbox"/> Rear Wiper/Washer (if equipped) | <input type="checkbox"/> Air Bag Warning Light
<i>If the warning lights remains on, it may indicate a system malfunction.</i> |
| <input type="checkbox"/> Clock (if equipped) | <input type="checkbox"/> Lamp Failure Sensor
<i>If the warning lights remains on, it may indicate a system malfunction.</i> |
| <input type="checkbox"/> Accessory Power Socket (if equipped) | <input type="checkbox"/> Track/Skid Control Light (if equipped)
<i>If the warning lights remains on, it may indicate a system malfunction.</i> |
| <input type="checkbox"/> Starter | <input type="checkbox"/> Tire Pressure Monitoring System (TPMS)
<i>Prior to TPMS activation and Pre-Delivery Service (PDS) of the vehicle the TPMS light will blink when IG is turned on. After TPMS activation and PDS of the vehicle the TPMS light will illuminate for a few seconds and go off when IG is turned on.</i> |
| <input type="checkbox"/> Audio/Video (if equipped) | |
| <input type="checkbox"/> Power Sliding Door (if equipped) | |
| <input type="checkbox"/> Convenience Memory Settings (if equipped) | |
| <input type="checkbox"/> Heated Seats (if equipped) | |