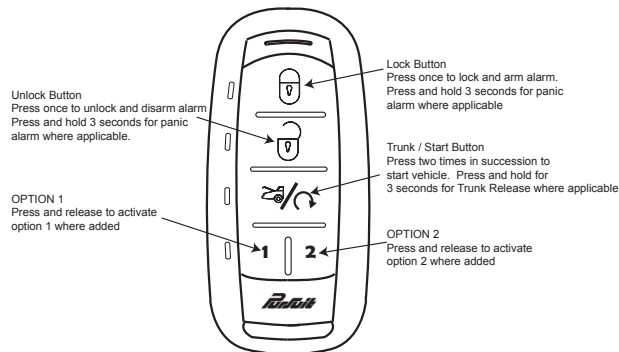




Model PR2LED
Operators Manual
RF Upgrade Kit



Check with your installation center for features and functions operational on your system.

To Operate System:

- 1) Press the lock button to lock the doors and arm the alarm if installed. The LED alongside the lock button will flash and the transmitter will beep once when the vehicle receives and responds to the command.
- 2) Press the unlock button to unlock the doors and disarm the alarm if installed. The LED alongside the unlock button will flash and the transmitter will beep twice when the vehicle receives and responds to the command.
- 3) Press and hold the Trunk/Start button for 3 seconds to unlock the trunk. The LED alongside the button will flash when the vehicle receives and responds to the command.
- 4) Press the Trunk/Start button two times in succession to start the vehicle a melody will sound upon start. The vehicle will start and run the predetermined time set up during installation (5 to 60 minutes selectable). During this run cycle, the LED alongside the button will flash 1 time every 10 seconds indicating the vehicle is in fact running.

Anytime during the run cycle, enter the vehicle by first unlocking the doors with your transmitter, insert your key and turn it to the run, NOT START, position, then step on the brake, the vehicle is now in control of the ignition key the transmitter will sound a shut down / owner take over melody.
NOTE: For push to start vehicle systems, simply enter the vehicle with your key in hand, and step on the brake.

PATENTED: www.voxintf.com/company/patents

Consult your installation center for operation and information on convenience options 1 & 2 which may have been connected or added to your vehicle.

Quick Stop Mode:

With vehicle running, if you wish to make a quick stop and leave the vehicle running, once you arrive at your destination:

- a) Place the gear selector in Park,
- b) Set the parking brake,
- c) With your foot OFF the brake, press the transmitter button two times in succession.

The vehicle will now be under control of the remote start system. Turn your ignition switch off, WITHOUT, stepping on the brake, and exit the vehicle. Lock the doors with the key to insure security.

(Alarm Systems Only) PUSH-BUTTON LED RECEIVER VALET/OVERRIDE/SAFETY SWITCH

The Push-Button LED switch located in the receiver allows you to temporarily bypass all alarm functions, eliminating the need to hand your transmitter to parking attendants or garage mechanics. When the system is in valet mode, all alarm functions are bypassed, however the remote panic feature and remote door locks will remain operational. To use the valet mode, the system must first be disarmed either by using your keychain transmitter, or by activating your personalized manual override code.

1. Enter the vehicle, and turn the ignition key to the on position.
2. Press and hold the Push-Button switch until the LED turns on solid. The system will remain in the valet mode.
3. To return to normal operation, press and release the Push-Button switch any time the ignition is on.

NOTE: Always remember to return the vehicle to the valet off position. This will ensure that the vehicle remains protected at all times.

(Alarm Systems Only) MANUALLY OVERRIDING YOUR SYSTEM:

USING THE RECEIVERS PUSH-BUTTON OVERRIDE SWITCH

Your Security System can be disarmed without the use of the keychain transmitter. This is necessary, since you will need the ability to operate your vehicle if the transmitter is lost or its battery fails. If your system has been selected for Valet Switch manual override as indicated on the last page of this manual, to bypass the alarm system;

1. Open the vehicle door. The alarm will sound.
2. Turn the ignition key to the on position.
3. Within 5 seconds, press and release the push-button override switch.

The alarm system will stop sounding and enter the (bypassed) mode. You can now start and operate the vehicle normally.

Typically this override mode is used only if the transmitter has become inoperative.

(Alarm & Keyless Systems Only) PROGRAMMING YOUR CUSTOM OVERRIDE CODE

Unlike override switches easily found, and defeated, this security system allows the consumer to program a personal override code, offering a higher level of security. To take advantage of this option, programmable feature # 9 must be selected for the Custom Code Option. Consult your installation center for programming details. The system comes from the factory with a preprogrammed override code of 11. To change this default override code, do the following:

1. Disarm the system by use of the transmitter, or by use of the emergency override sequence. Turn the ignition switch to the on position.
2. Within 10 seconds, press and release the Receivers push-button switch, 3 times.
3. Within 10 seconds turn the ignition switch off, on, off, on, off, on. (The siren or horn will beep and the lights will flash one time.)

4. Within 10 seconds, begin to enter your chosen 10ths digit by pressing and releasing the Receivers push-button switch from 1 up to 9 times.
5. Within 10 seconds of the last entered 10ths digit, turn the ignition switch off then on.
6. Within 10 seconds, begin to enter your chosen units digit by pressing and releasing the Receivers push-button switch from 1 up to 9 times.
7. Finish by turning the ignition switch to the off position. If the new code was accepted, the unit will report back the newly entered code, by flashing the LED, first indicating the 10ths digit, pause and then the units digit. The unit will report the new code three times with a one second pause between each code, then the system will begin arming. If the LED flash pattern reports the previously stored code, the new code was not entered correctly. Please repeat steps 1 through 7 above considering the following.

NOTE: Acceptable digits 10ths or units are 1 through 9. The unit will not recognize a 0 (Zero), or no digit entered in any place, units or tenths.

NOTE: If 15 seconds of inactivity expire, or if the ignition switch is turned off for more than 5 seconds during any of the above steps, the unit will revert back to the last successfully stored code.

CUSTOM CODE PROGRAMMING EXAMPLE

To Change the code from the factory preassigned code of 11 to "52" you would do the following:

1. Disarm the system by use of the transmitter, or by use of the emergency override sequence.
2. Turn the ignition switch to the on position.
3. Within 10 seconds, press and release the Receivers push-button switch, 3 times.
4. Within 10 seconds turn the ignition switch off, on, off, on, off, on. (The siren or horn will beep and the lights will flash one time.)
5. Within 10 seconds, begin to press and release the Receivers push-button switch to set the tenths digit. (As per the example, press and release 5 times to set the tenths digit to 5)
6. Within 10 seconds of the last press of the pushbutton, turn the ignition switch off then on.
7. Within 10 seconds, begin to press and release the Receivers Push-button switch to set the units digit.
(As per the example, press and release 2 times to set the units digit to 2).
8. Turn the ignition switch to the off position. Immediately observe the LED flash pattern. You will notice the LED flashing five times, pause, and then flash two times, pause. This pattern will be repeated three times indicating the new code (52) has been accepted and stored in memory.

NOTE: If after step 7, the LED flashes a code other than what was just entered, this indicates that the code has not been changed. You will have to repeat steps 1 through 7 above being certain to note the following:

Acceptable digits 10ths or units are 1 through 9. The unit will not recognize a 0 (Zero), or no digit entered in any place, units or tenths.

NOTE: If 15 seconds of inactivity expire, or if the ignition switch is turned off for more than 5 seconds during any of the above steps, the unit will revert back to the last successfully stored code.

(Alarm Systems Only) MANUALLY OVERRIDING YOUR SYSTEM:

USING THE CUSTOM CODE OVERRIDE

Assuming the override code programmed has not been changed, and the default override code of 11 is in the system's memory.

- 1) Enter the vehicle and turn the ignition switch to the on position.

NOTE: The siren will sound.

2) Within 5 seconds, press and release the Receivers push-button switch 1 time.
 3) Within 5 seconds, turn the ignition switch off then on.
 4) Within 5 seconds, press and release the Receivers push-button switch 1 time.
 5) Turn the ignition switch off then on and start the vehicle.
NOTE: If you have changed the programmed override code then substitute your new code tenths for step 2 above, and units for step 5 above.

(All Models) PUSH-BUTTON LED RECEIVER SAFETY CONTROL SWITCH

The Push-Button LED control switch allows you to temporarily disable the remote starting function of the system. This recommended whenever the vehicle is being serviced. To place the system in the service mode:

- 1) With the system disarmed/unlocked, and the ignition switch off Press and Hold the Push-Button, found on the windshield receiver, in.
- 2) Turn the ignition switch on, off, on, off, on, off.
- 3) The LED begins to flash two short flashes followed by one long flashes and continues this pattern until returned to normal mode of operation. This puts the unit into the R/S Override mode indicating that the remote start is in the service mode and will not start from RF or any other input Posse or otherwise.

To Exit R/S Override Mode

- 1) With the system disarmed, Press and Hold the Push-Button, found on the windshield receiver, in.
- 2) Turn the ignition switch on, off, on, off, on, off.
- 3) The LED turns off indicating that the R/S unit is fully functional one again.

REMOTE STARTING THE VEHICLE

The system WILL NOT start the vehicle if any one of the following conditions exists:

1. The Vehicle Hood Is Opened.
2. The Gear Selector Is In Any Gear Other Than Park.
3. The Brake Is Depressed.
4. The Safety Control Switch Is In The Off Position.
- 5 To Start The Vehicle, press the start button two times in succession, or use the factory lock button 3X as instructed by your installation center.

WARNING! Be certain that the vehicle is outdoors before using this or any remote vehicle starting device. A running engine produces dangerous carbon monoxide fumes which can be harmful or fatal if prolonged exposure occurs. DO NOT remote start the vehicle if it is garaged

OPERATING ON AUTOMATIC START UP TIMER MODE

Your system has the ability to automatically start the vehicle every 2 or 4 hours over a 48 hour period. This feature is especially useful in cold climates where the only means to keep the engine and engine fluids warm is to periodically start the engine.

WARNING! Be certain that the vehicle is outdoors before using this or any remote vehicle starting device. A running engine produces dangerous carbon monoxide fumes which can be harmful or fatal if prolonged exposure occurs. DO NOT remote start the vehicle if it is garaged.

Page 4

TO BEGIN THE AUTOMATIC START UP TIMER

1. Turn the ignition key on then off.
2. Within 10 seconds, activate the RF start command two times. (Push the programmed channel button of your keychain transmitter 4 times).
The parking lights will flash and the siren will chirp 4 times indicating the timed start mode is activated. The vehicle, on a 2 or 4 hour interval basis, will automatically start, run for the preprogrammed time (5, to 60 minutes), and then shut off. This will continue for 48 hours.

NOTE: The automatic start up timer can also be initiated from the keychain transmitter. To do this:

1. Start the vehicle using the keychain transmitter by pressing and releasing the second channel transmitter button 2 times.
2. Shut off the vehicle using the keychain transmitter by pressing and releasing the second channel transmitter button 2 times.
3. Within 10 seconds of step 2, activate the RF start command two times (Push the second channel button of your keychain transmitter 4 times).
The parking lights will flash and the siren will chirp 4 times indicating the timed start mode is activated.

CANCELING THE AUTOMATIC START UP TIMER

To cancel the automatic start up timer do one of the following:

1. Start the vehicle manually with the use of the ignition key and depress the brake pedal.
2. Remote start the vehicle using your keychain RF transmitter.

Programming New Or Replacement 5BER17XPR or 175XPR Transmitters.

- 1) Turn the ignition key to the on position.
- 2) Press and release the valet/programming switch found on the windshield receiver 3 times.
- 3) Press the Lock Button of each transmitter you want programmed until the lights flash or you hear a chirp from the horn or siren.
- 4) Turn the ignition switch off.

The above action programs the Lock, Unlock, Start/Trunk, buttons which are typical for most systems.

For additional channel programming beyond the option 1, option 2, etc., you can use any unused button or combination of buttons not in use.
In other words, to access option channel 5, 6, 7, you would do the following:

From step 3 above:

- a) Press and release the valet/programming button 3 additional times to get to channel 4, then Press any unused transmitter button or button combination to program channel 4.
- b) From a, press and release the valet/programming button 1 time to get to channel 5, then press any unused transmitter button or button combination to program channel 5
- c) From b, press and release the valet/programming button 1 time to get to channel 6, then press any unused transmitter button or button combination to program channel 6.
- d) From c press and release the valet/programming button 1 time to get to channel 7, then press any unused transmitter button or button combination to program channel 7

Note: Not all systems have channels above 3, check with your installation center for options your system may or may not have.

Note: Certain systems have the ability to utilize channels 6 and 7 for driver priority programming. For driver priority, the vehicle must be equipped with this feature, and the optional feature must be

set up and installed by your installation center. Once this feature is added when the unlock button of transmitter 1 is used, it will set driver 1 priority and when the unlock button of transmitter 2 is used it will set driver 2 priority. In this situation, the unlock button can be programmed into two receiver channels, unlock, channel 2 and driver priority 6 or 7. In no other circumstance will the system allow a transmitter button to be programmed into 2 receiver channels at the same time.

This remote has the ability to operate 2 similar Alarms From A Single Transmitter. To toggle on and off vehicle one or two...
Press the Trunk/Key button + the Lock button for 5 seconds.
The LED flashes 2 times. Release the buttons, to select 2nd vehicle mode.
Program this transmitter into the second vehicle's system. Any time you are in 2nd vehicle mode when the transmitter is operated, the LED will flash twice for each function. When in the prime vehicle mode, the LED will flash once for each function.

To Erase All Transmitters:

- 1) Turn the ignition switch to the "On" position.
 - 2) Press and release the pushbutton switch found on the windshield mount receiver 3 times. (The LED on the receiver will flash.
 - 3) Press and hold the push-button switch on the windshield receiver for 6 seconds. The LED will flash 2X fast which is an indication all transmitters programmed to the system are now erased.
 - 4) Turn the ignition switch off.
- Once you have erased all transmitters, you will have to go back and program all transmitters that you want to operate your system.

Transmitter Battery Replacement

5BER17XPR

- 1) Remove the 00 Phillips head screw from the rear case.
- 2) Separate the case halves by inserting a small plastic tool in the top right slot.
- 3) Carefully slide the two CR2025 batteries from the transmitter PCB and dispose of properly.
- 4) Insert two new CR2025 batteries with the (+) side up away from the PCB.
- 5) Close the case in reverse of disassembly.

175XPR

- 1) Locate the slot at the lower right hand side of the transmitter case.
- 2) Separate the case halves by inserting a small plastic tool in the slot and carefully prying apart the case halves.
- 3) Carefully slide the CR2032 battery out from under the battery clip and dispose of properly.
- 4) Insert a fresh CR2032 battery with the (+) side up away from the PCB.
- 5) Close the case in reverse order of disassembly.

This Page Intentionally Left Blank

Page 7

128-9486
Page 7

To purchase replacement transmitters or to get additional product information go to:
www.pursuitcarsecurity.com

FCC COMPLIANCE

This device complies with part 15 of the FCC Rules. Operation is subject to the following two conditions:

- (1) This device may not cause harmful interference, and
- (2) this device must accept any interference received, including interference that may cause undesired operation.

This equipment has been tested and found to comply with the limits for a Class B digital device, pursuant to part 15 of the FCC Rules. These limits are designed to provide reasonable protection against harmful interference in a residential installation. This equipment generates, uses and can radiate radio frequency energy and, if not installed and used in accordance with the instructions, may cause harmful interference to radio communications. However, there is no guarantee that interference will not occur in a particular installation. If this equipment does cause harmful interference to radio or television reception, which can be determined by turning the equipment off and on, the user is encouraged to try to correct the interference by one or more of the following measures:

- Reorient or relocate the receiving antenna.
- Increase the separation between the equipment and receiver.
- Connect the equipment into an outlet on a circuit different from that to which the receiver is connected.
- Consult the dealer or an experienced radio/TV technician for help.

Warning!

Changes or modifications made to this equipment not expressly approved by the part responsible for compliance could void the user's authority to operate the equipment

NOTE: The manufacturer is not responsible for any radio or TV interference caused by unauthorized modifications to this equipment. Such modifications could void the user's authority to operate the equipment.